

## Enterprise Guide desktop

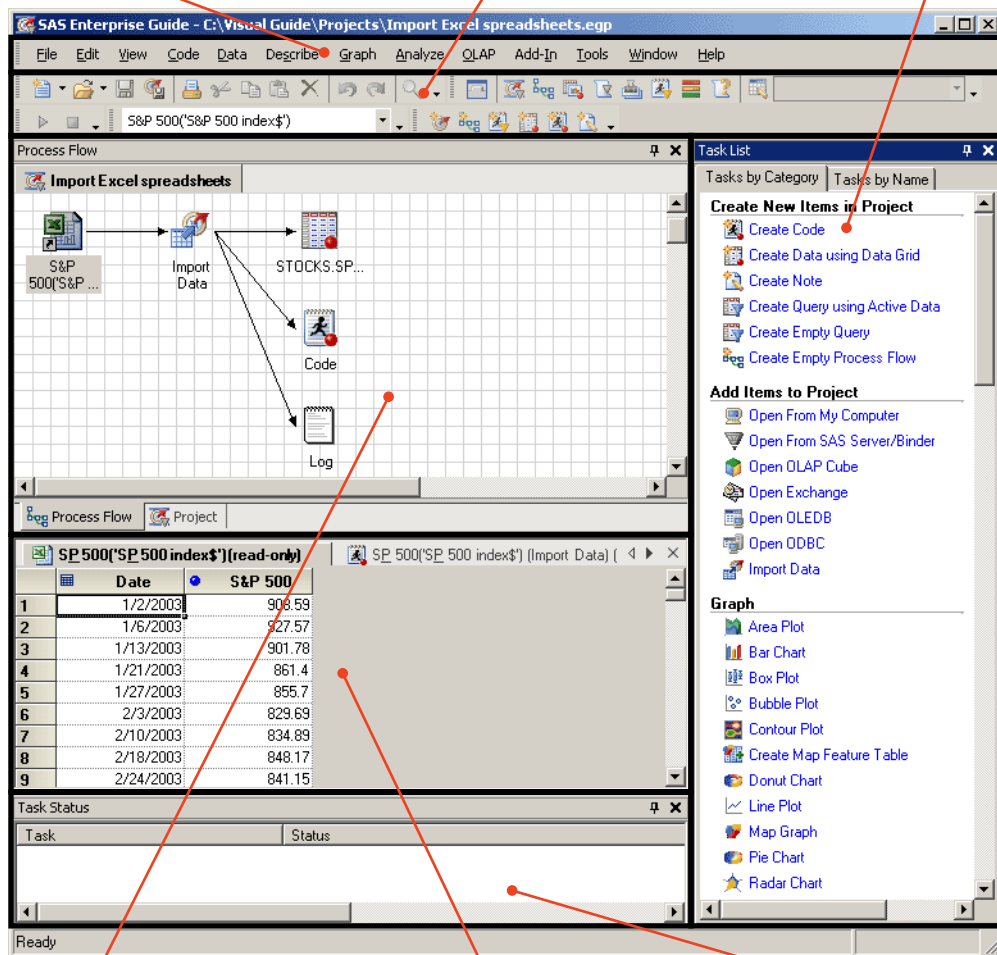
Before you start working with your Enterprise Guide projects, it is helpful to take a closer look at the Enterprise Guide desktop and its elements.

On the Enterprise Guide desktop you will find the menu bar, tool bar and several windows the most important of which are the Project, Workspace and Task List windows. These elements will be described in detail below.

**Menu bar:**  
Pull-down menus provide access to Enterprise Guide commands

**Tool bar:**  
Buttons that provide shortcuts for frequently performed tasks

**Task List window:**  
Built-in tasks as well as custom tasks developed by Enterprise Guide users



**Project window:**  
Shows the data files, programs and output in your current project

**Workspace window:**  
Helps you view data or output and edit your programs

**Task Status window:**  
Shows the status of a submitted task